



Zeus Global Load Balancer

Version 2.1

Global server load balancing for business continuity and improved performance

Zeus. Why wait...

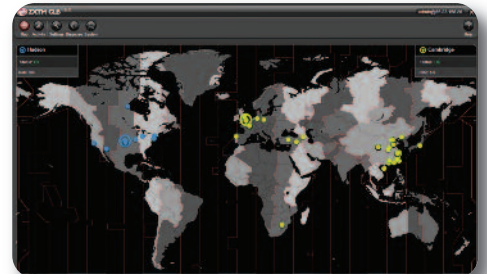
Rich and powerful global server load balancing

Zeus Global Load Balancer is a powerful, easy to use global server load balancing solution. It provides business continuity and improved performance by enabling failover and load balancing across globally distributed datacenters.

Many organizations locate their online services in multiple datacenters to get their content closer to their users and to improve resilience in the event of site attacks or datacenter failure.

Zeus Global Load Balancer enables the transparent delivery of these services and applications from multiple datacenters.

It continually monitors the performance and availability of each of the services you run in the different locations. It manages user requests to access these services, intelligently directing each user to the most appropriate service point based on current performance, service availability and geographic proximity.



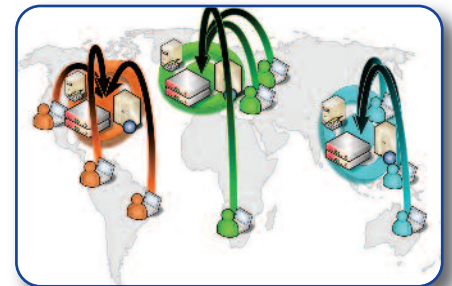
Zeus Load Balancer manages all requests to access your service and directs each user to the most appropriate service point. The rich user interface gives a complete picture of where your users are located and which service point they are using.

With Zeus Global Load Balancer you will:

- **Ensure business continuity** in the event of a site attack, datacenter failure or unplanned maintenance
- **Place your services closer to your users**, giving them a faster, more reliable service and a better overall experience
- **Improve datacenter utilization and efficiency** by load-balancing traffic towards datacenters with spare capacity as user volumes move throughout the day
- **Reduce system administration risks** by draining traffic away from services in a datacenter before planned maintenance
- **Obtain a clear picture of activity** where your users are located and which datacenters they are accessing.

Zeus Global Load Balancer is based on the award-winning Zeus Traffic Manager. The Zeus solution is a standalone global server load balancing device that functions equally well with any vendor's load balancing or network infrastructure.

- Zeus Global Load Balancer monitors the availability, correct operation and performance of each datacenter
- When a user requests a service, Zeus Global Load Balancer directs them to the closest, best performing datacenter
- Users are never sent to datacenters that have failed
- Active – passive failover gives controlled transfer of traffic from one datacenter to another in the event of failure
- Datacenter draining makes it easy to take a datacenter offline.



End-users get a better quality of service when they access applications and services from a geographically local datacenter.

DNS-based global server load balancing

Zeus Global Load Balancer works alongside the existing DNS infrastructure, managing and rewriting DNS responses to control which datacenter a user is directed to.

Zeus Global Load Balancer is simple to install and test. All DNS records remain on the DNS servers so very little configuration or operational disruption is incurred when installing Zeus Global Load Balancer. The powerful visualizations give clear indications of the effectiveness of the global server load balancing operation.

Load balancing and failover modes

Active – passive failover with optional “no-fail-back” is ideal for disaster recovery purposes and applications that cannot be run simultaneously in different locations.

Load balancing and geographic proximity improve site performance and datacenter utilization, reduce bandwidth usage and still ensure resilience against catastrophic datacenter or service outages.

Service and datacenter draining

Draining lets an administrator easily take a service or datacenter offline for planned maintenance, without disrupting ongoing user traffic.

Flexible high-availability configurations

Cluster scalability allows the deployment of multiple active Zeus Global Load Balancers in a datacenter, eliminating single points of failure and ensuring that your deployment can grow in-line with your business needs. Performance scales linearly for easy capacity planning.

Comprehensive health monitoring

A catalog of pre-built and configurable monitors can be used to observe the availability and correct operation of each service in each datacenter.

Multi-domain configuration

Zeus Global Load Balancer manages traffic to multiple different groups of services, each with their own load-balancing policies, datacenter locations and health tests.

Activity monitoring and diagnostics

Zeus Global Load Balancer provides you with real-time reporting and historical graphs of your applications' activity via a web-based interface and SNMP. Full global load balancer logging records each load balancing decision for detailed analysis.



Zeus Global Load Balancer has a rich and easy-to-use web-based administration interface.

Combined with one-click self-diagnostics, you can identify usage trends and isolate faults rapidly, reducing the time to fix.

Product versions

Zeus Global Load Balancer is available in two versions.

The “Disaster Recovery” version is suitable for organizations that require business continuity in the event of datacenter failure. For each service, one datacenter is active at a time; if the service fails, Zeus Global Load Balancer sends users to the next available datacenter.

The full Zeus Global Load Balancer product adds load balancing and geographic proximity. Multiple datacenters may be active at the same time for each service and Zeus Global Load Balancer sends each user to the datacenter that is responding fastest and is closest to that user.

Find out more

Further information, deployment examples and solutions can be found at www.zeus.com

To evaluate Zeus Global Load Balancer, please visit www.zeus.com

Key features and benefits

Zeus Global Load Balancer:

- **Manages DNS lookups** – reliable and fully standards compliant
- **Easy to install** – works with existing DNS servers, with minimal reconfiguration
- **Available as software or as a hardware appliance** for maximum choice
- **Complete service health monitoring** continually tests services for availability and correct operation with a range of pre-built and configurable tests
- **Active – passive failover** with optional “no-fail-back” for controlled transfer of services from one location to another
- **Load balancing methods** (not available in Disaster Recovery version):
 - **Datacenter load balancing based** on observed performance
 - **Geographic proximity** routes each user to the closest datacenter
 - **Adaptive** routes users based on proximity and datacenter load
- **Sophisticated visualization** displays the effectiveness of the configuration
- **Activity monitoring and self-diagnostics** for trend analysis and fault isolation.

Zeus. Why wait...

Zeus software enables our customers to create, manage and deliver exceptional online services. Our software technology runs across Physical servers, Virtual machines and Cloud-based infrastructure.

Deployment options

Software

Run Zeus Global Load Balancer software on the Physical or Virtualization platform of your choice:

- Recommended: 1 GB RAM; 20 GB disk space; AMD Opteron/Intel Xeon/Sun SPARC; Dual 1Gbit NICs
- 32-bit and 64-bit UNIX/Linux platforms: Linux, Solaris.

Product options:

- Zeus Global Load Balancer (Disaster Recovery) for business continuity purposes; one active datacenter per service
- Zeus Global Load Balancer for business continuity and improved customer experience; multiple active datacenters per service.

Cloud

Run Zeus Global Load Balancer software on any supported Cloud infrastructure.

Zeus at a glance

Zeus software enables our customers to create, manage and deliver exceptional online services in Physical, Virtual and Cloud environments. Implementing a Zeus solution allows organizations to visualize and manipulate the flow of traffic to their web-enabled applications, ensuring a consistently robust web infrastructure.

Zeus powers over one million website infrastructures across the world including, the BBC, BT, Comic Relief, Domino's Pizza, Gilt Groupe, ITV, Play.com, See Tickets, STA Travel and Virgin Media.

For further information, please email: info@zeus.com or visit www.zeus.com to contact the Zeus office nearest to you.

WHY WAIT... DOWNLOAD A FREE SOFTWARE TRIAL

Because Zeus Global Load Balancer is pure software, you can download it free of charge and evaluate it before you buy. Technical support is also available during your evaluation.

Web: www.zeus.com

Blog: blog.zeus.com

Twitter: twitter.com/ZeusTechnology



Zeus Technology Limited (UK)

The Jeffreys Building
Cowley Road
Cambridge CB4 0WS
United Kingdom

Sales: +44 (0)1223 568555

Main: +44 (0)1223 525000

Fax: +44 (0)1223 525100

Email: info@zeus.com

Web: www.zeus.com

Zeus Technology, Inc. (U.S.)

1875 South Grant Street
Suite 720
San Mateo, California 94402
United States of America

Phone: 1-888-ZEUS-INC

Fax: 1-866-628-7884

Email: info@zeus.com

Web: www.zeus.com